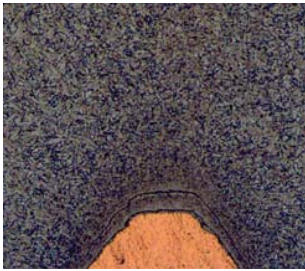


For Weller Models **WD1000, WSD81, WSD80, WSP80, WP80**



- Alloy plating layer has high density to ensure good heat conductivity.
- Even alloy layer plating on copper for longer life
- No breakage of alloy layer inside to ensure tips can stand much more corrosion

Soldering Tip Micro Analysis

Description	Width (L:mm)	Thickness (A:mm)	Our P/N	Weller P/N
Long Chisel Tip	1.2	0.4	SIL-K	LT K
Chisel Tip	1.6	0.7	SIL-A	LT A
Long Chisel Tip	2.0	1.0	SIL-B	LT L
Chisel Tip	2.4	0.8	SIL-B	LT B
Chisel Tip	3.2	0.8	SIL-C	LT C
Chisel Tip	4.6	0.8	SIL-D	LT D
Chisel Tip	0.8	0.4	SIL-H	LT H
Sharp Pointed Tip	0.2	1.6	SIL-1S	LT1S

**Weller is a brand of Apextools. Above tips SIL series are not original Weller tips - but equivalent substitutes. Above cross reference is quick indicative chart only. We assume no legal liabilities as a result of its use and publishing. Users are requested to try out samples before buying.*